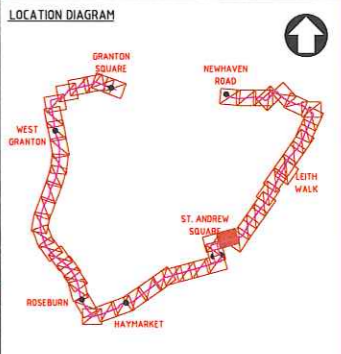


- NOTES**
- PLANNING BOUNDARY.
  - LAND OWNERSHIP - CITY OF EDINBURGH COUNCIL.
  - EXISTING PRE-CAST CONCRETE PAVING FLAGS TO BE RETAINED.
  - PROPOSED PRE-CAST CONCRETE PAVING FLAGS (600mm x 900mm X 63mm).
  - PROPOSED BLISTER TACTILE PAVING (400mm X 400mm X 63mm).
  - YORK PLACE TRAMSTOP, PROPOSED PRE-CAST CONCRETE FLAGS (400mm X 400mm X 63mm).
  - PROPOSED STONE KERB, FLUSH UPSTAND OF 6mm.
  - PROPOSED STONE KERB, UPSTAND HEIGHT VARIES. MAXIMUM UPSTAND HEIGHT 125mm.
  - INB - THE TRANSITION FROM FULL HEIGHT KERB TO FLUSH HEIGHT KERB ARE NOT SHOWN.
  - PROPOSED TEXTURED CONCRETE.
  - PROPOSED TRAMWAY KERB, UPSTAND VARIES.
  - PROPOSED PEDESTRIAN GUARDRAIL, 900mm HIGH.
  - PROPOSED WALL MOUNTED STREET LIGHTING - APPROVED UNDER PREVIOUS APPLICATION 08/01879/PA.
  - PROPOSED O.L.E. POLE LOCATION - APPROVED UNDER PREVIOUS PLANNING APPLICATION 08/01879/PA.
  - PROPOSED RELOCATED O.L.E. POLE LOCATION.
  - PROPOSED OLE WIRE TO CONNECT RELOCATED OLE POLES.
  - TPDS CABINET (TRAM POSITIONING DETECTION SYSTEM)
  - CONTROLLER
  - TRAFFIC SIGNAL POLE WITH FULL GREEN PRIMARY ASPECT AND PHASE LETTER
  - TRAFFIC SIGNAL POLE WITH FULL GREEN ASPECT (SECONDARY HOODS)
  - TRAFFIC SIGNAL POLE WITH GREEN ARROW ASPECT
  - TRAFFIC SIGNAL POLE WITH LRT ASPECT
  - MICROWAVE VEHICLE DETECTOR AND PHASE LETTER
  - MICROWAVE VEHICLE DETECTOR (NARROW BEAM)
  - FAR SIDE PEDESTRIAN HEAD
  - SIGNAL POLE WITH PUSH BUTTON UNIT
  - PROPOSED TRAM BUFFER - RAWIE TYPE 2 EB.
- REFER TO DRAWING ULE90130-01-STP-00133, FOR THE YORK PLACE TEMPORARY TRAMSTOP GENERAL ARRANGEMENT DETAILS.  
REFER TO DRAWINGS ULE90130-01-PLG-00234 AND ULE90130-01-PLG00238, FOR CROSS SECTIONS.



REV.	DESCRIPTION OF REVISION	DRN.	CHKD.	APP.	DATE
5	ISSUED FOR PLANNING APPROVAL	JJ	HY	HY	07/03/12
4	ISSUED FOR PLANNING VARIATION	JS	LH	AR	27/04/11
3	ISSUED FOR PRIOR APPROVAL	MJ	MS	SN	13/05/08
2	ISSUED FOR TDWG	MJ	MS	SN	12/05/08
1	FIRST ISSUE	MJ	MS	SN	04/09/07

DRAWING STATUS: Issued for External Approval



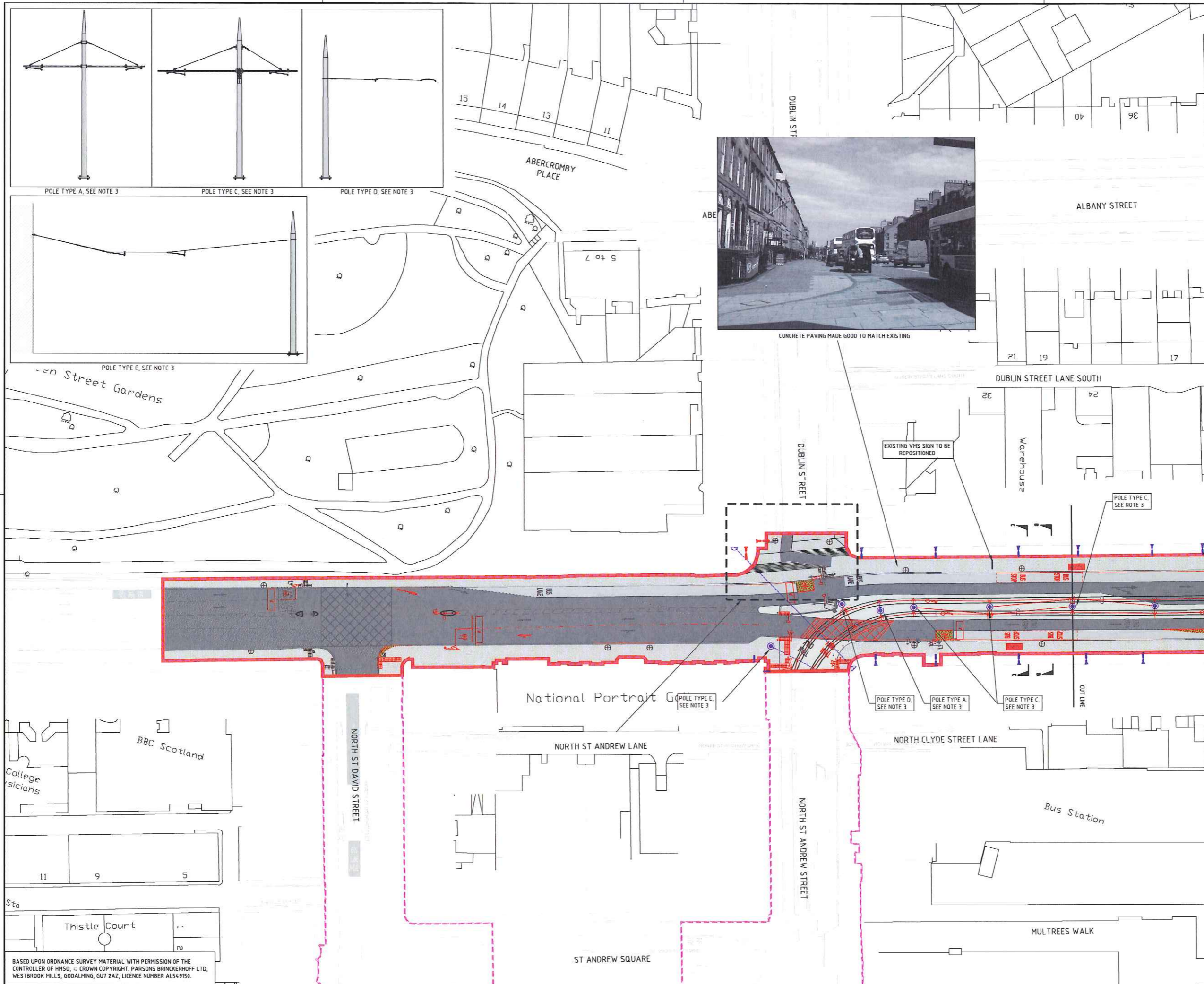
EDINBURGH TRAM NETWORK

PARSONS BRINCKERHOFF  
SOS CITY POINT  
65 HAYMARKET TERRACE  
EDINBURGH EH12 5HD

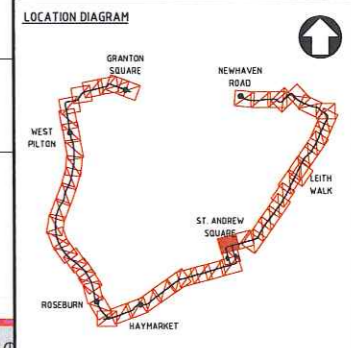
NEWHAVEN ROAD TO HAYMARKET  
YORK PLACE  
PLANNING DRAWINGS BATCH 1/13B  
GENERAL ARRANGEMENT SHEET 1 OF 1

DRAWN BY JANKOWSKIM	CHECKED BY STACYM
APPROVED BY NEY	ORIGINAL DRAWING SIZE A1
DATE 15/11/2006	SCALE(S) 1:500
DRAWING NUMBER ULE90130-01-PLG-00058	REV. 5

BASED UPON ORDNANCE SURVEY MATERIAL WITH PERMISSION OF THE CONTROLLER OF HMSO. © CROWN COPYRIGHT. PARSONS BRINCKERHOFF LTD, WESTBROOK MILLS, GODALMING, GU7 2AZ, LICENCE NUMBER AL549150.



- NOTES**
- LIMITS OF DEVIATION AND PRIOR APPROVAL SITE BOUNDARY OVERLAP IN VARIOUS AREAS. IN THESE CASES, ONLY THE PRIOR APPROVAL SITE BOUNDARY WILL APPEAR ON THESE DRAWINGS.
  - THIS DRAWING HAS BEEN PRODUCED FOR THE VARIATION TO THE PRIOR APPROVAL APPLICATION AND IS NOT TO BE USED FOR CONSTRUCTION. PRIOR APPROVAL CONSENT SHOWN IN GREYSCALE. PROPOSED VARIATIONS ARE SHOWN IN COLOUR.
  - TYPICAL OLE POLE SIZES ARE AS FOLLOWS:  
 TYPE A - CENTRE POLE, HEIGHT 8.4m, DIAMETER 273mm AT BASE, TAPERING TO 219mm AT TOP.  
 TYPE B - CENTRE POLE, HEIGHT 7.9m, DIAMETER 323mm AT BASE, TAPERING TO 273mm AT TOP.  
 TYPE C - CENTRE POLE, HEIGHT 8m, DIAMETER 273mm AT BASE, TAPERING TO 219mm AT TOP.  
 TYPE D - SIDE POLE, HEIGHT 7m, DIAMETER 273mm AT BASE, TAPERING TO 219mm AT TOP.  
 TYPE E - SIDE POLE, HEIGHT 7m, DIAMETER 273mm AT BASE, TAPERING TO 219mm AT TOP.
  - SEE DRAWING ULE90130-01-PLG-00234 FOR CARRIAGEWAY SECTION DETAILS.
  - LIGHTING TO REMAIN BUILDING MOUNTED IN EXISTING LOCATIONS UNLESS OTHERWISE NOTED.
  - SEE DESIGN STATEMENT (ULE90130-01-REP-00083) FOR FURTHER BUILDING FIXING INFORMATION.
  - PAVINGS TO REMAIN IN CURRENT POSITION OR NEW / RESET PAVINGS TO BE PROVIDED IN SAME LAYOUT AND ORIENTATION AS EXISTING.
- KEY**
- LIMIT OF DEVIATION
  - LIMIT OF LAND TO BE ACQUIRED OR USED (LLAU)
  - PRIOR APPROVAL SUBMISSION SITE BOUNDARY
  - NEW PAVING SLABS PREVIOUSLY TARMAC ROAD
  - NEW BUS LANE PREVIOUSLY TARMAC ROAD
  - NEW CROSSING POINT TACTILES
  - NEW KERBLINE
  - NEW TRAFFIC SIGNALS
  - STREET LIGHTING - APPROVED LOCATION AND NOT REQUIRED
  - STREET LIGHTING - APPROVED LOCATION
  - STREET LIGHTING - NEW LOCATION
  - WALL MOUNTED STREET LIGHT - APPROVED LOCATION AND NOT REQUIRED
  - WALL MOUNTED STREET LIGHT - APPROVED LOCATION
  - WALL MOUNTED STREET LIGHT - NEW LOCATION
  - OLE BUILDING FIXING - APPROVED LOCATION AND NOT REQUIRED
  - OLE BUILDING FIXING - NEW LOCATION
  - OLE POLE - APPROVED LOCATION
  - OLE POLE - NEW LOCATION
  - RELOCATED BUS STOP SHELTER



REV	DESCRIPTION OF REVISION	DRN	CHKD	APP	DATE
4	ISSUED FOR PLANNING VARIATION	JS	LT	AR	27/05/11
3	ISSUED FOR PRIOR APPROVAL	NI	VH	SN	13/05/08
2	SECOND ISSUE	NI	VH	SN	28/02/08
1	FIRST ISSUE	NI	MS	SN	04/09/07

DRAWING STATUS

**Issued for External Approval**

**EDINBURGH TRAM NETWORK**

**PARSONS BRINCKERHOFF**

505 CITY POINT  
65 HAYMARKET TERRACE  
EDINBURGH EH12 5HD

**NEWHAVEN ROAD TO HAYMARKET  
YORK PLACE  
PLANNING DRAWINGS BATCH 1/13  
GENERAL ARRANGEMENT SHEET 2 OF 2**

DRAWN BY JANKOWSKIM	CHECKED BY STACYM
APPROVED BY NEY	ORIGINAL DRAWING SIZE A1
DATE 15/11/2006	SCALE(S) 1:500
DRAWING NUMBER ULE90130-01-PLG-00012	REV. 4

PB INTERNAL VERSION NUMBER : 3

BASED UPON ORDNANCE SURVEY MATERIAL WITH PERMISSION OF THE CONTROLLER OF HMSO. © CROWN COPYRIGHT. PARSONS BRINCKERHOFF LTD, WESTBROOK MILLS, GODALMING, GU7 2AZ, LICENCE NUMBER ALS49150.